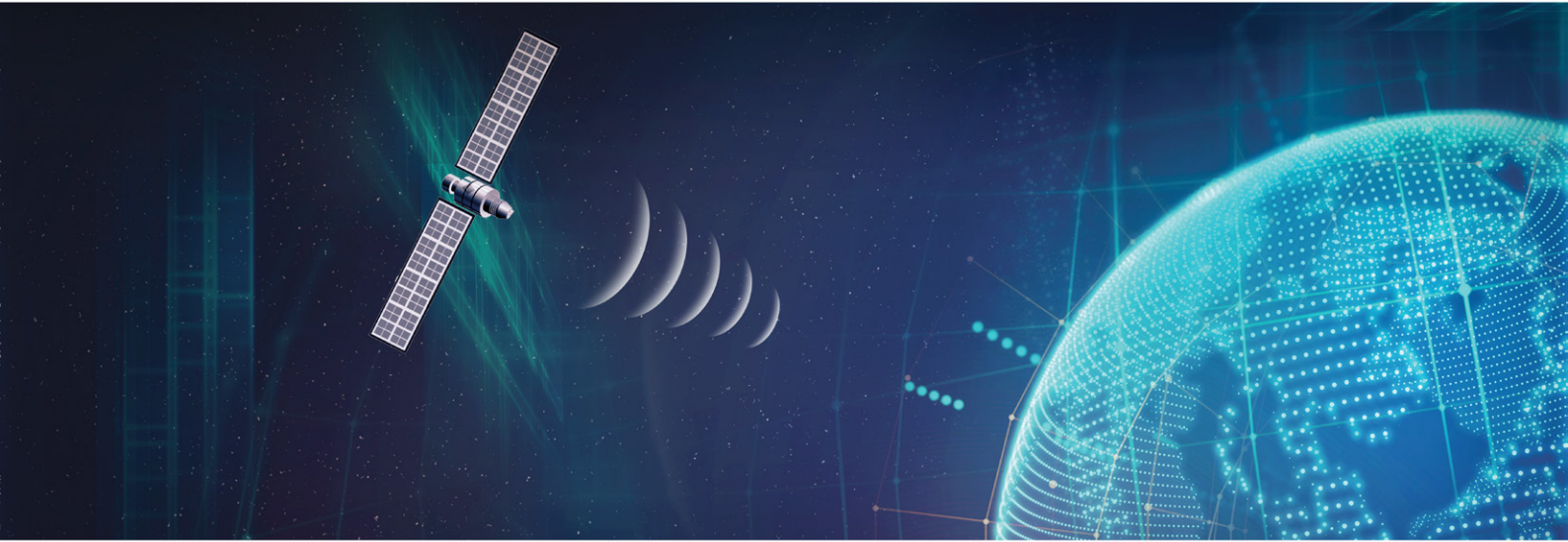


# WATCHLOCK CUBE

Versatile, user-friendly smart reporting padlock



 Cargo Security  Customs Operations  Remote Locations  Commercial & Retail

## WatchLock Cube: Smart reporting Lock that keeps you updated in real-time

WatchLock Cube is our latest version of the award-winning WatchLock padlock—combining advanced GPS and GSM technology with a versatile locking system.

It provides notifications in real-time with any predefined irregular event—acting both as a security and as a monitoring solution. WatchLock Cube protects your assets and communicates with you—no matter where you or your assets are.

It is both versatile and user friendly. The cube's electronics shell can fit a variety of C10 padlocks from various manufactures.

WatchLock Cube is equipped with high-end electronic components and its battery lifetime is extended four folds compared with WatchLock.



## WATCHLOCK CUBE AWARD-WINNING BENEFITS

- Real-time information
- Customized alerts
- Extended Battery Life
- Use any AA batteries
- Versatile design - can fit wide range of locks
- User friendly - easy to configure and use.
- Autonomous unit - no installation or wiring are required
- Wide temperature range – can operate under extreme conditions
- Can be used anytime, anywhere

Starcom's superior technology - built to work better and last longer

**STARCOM**  
Systems | Above All

## WatchLock Cube - Technical Specifications:

Location	Type	GPS, GLONASS (optional)
	Time To First Fix (TTFF)	12 sec (hot start)
	Positioning Accuracy	10m CEP (50%)
	Velocity	0.2m/s (50%)
	Antenna Type	Built in (concealed)
Environmental Specifications	Operating Temperature	-20°C to +60°C
	Storage Temperature	-40°C to +85°C
CPU	Static RAM	128 Kb
	Non-volatile Memory	34 Kb
	Flash Memory	2048 Kb
Battery	Type	4 AA Batteries (Rechargeable / Non-rechargeable)
	Power	Varies by type of AA batteries used. It is the capacity of a single AA battery used multiplied by 0.8
GSM Communication	Type	GSM: 850/900/1800/1900
	Networks	SMS, GPRS, HSDPA 850/900 class 4 (2 watt) 1800/1900 class 1 (1 watt)
Physical Specifications	Dimensions	7.5 x 7.5 x 8 cm (17cm with C2 Shackle)
	Weight	910 gr (padlock included)
Accelerometer	Type	3 Axis, 0.1g resolution
	Purpose	Identify and report events of impact
Access Port	Type	USB
Power consumption (mA)	Sleep/Idle	0.05
	GPS only	105
	GPRS only	80
	GPS and GPRS	165